

Don't chance it Check your tread



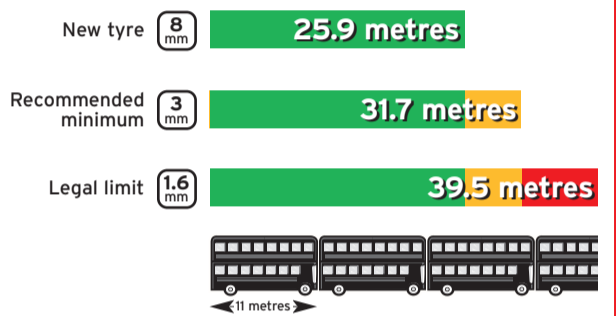
It is recommended that you change your tyres when the tread depth is 3mm

Independent research* has provided convincing new evidence that worn tyres significantly increase the chances of having an accident on wet roads by increasing the stopping distance.

The test results showed that significant increases in stopping distance began to appear when the tyre is worn down to 3mm. Although the legal minimum tread depth is only 1.6mm, this new research showed tyres with 3mm tread had a **25% better performance** than those at 1.6mm – which represents an **extra 8 metres in wet conditions**. Tyre grip when cornering is similarly affected.

Stopping distance chart

It takes longer to stop with reduced tread on wet roads



*Source: Tests were carried out by independent experts, the Motor Industry Research Association, in 2003 and 2004 on 4 different vehicles: a mid-range family hatchback, an MPV, executive saloon and a high performance saloon car. Depth of water controlled to 0.5mm to 1.5mm, on an asphalt road surface. Maximum braking force applied from a speed of 50mph.

Tyres were tested at 4 different tread depths – 8mm (new), 5mm, 3mm, and 1.6mm.

Recommended by major car manufacturers

Major European manufacturers recommend that you change your tyres at 3mm, owing to the reduction in grip in wet weather and increased risk of aquaplaning.

Ask for the handy tyre tread checker card



ROADSAFE

ROSPA
The Royal Society for the
Prevention of Accidents

Don't chance it Check your tread



mm

It is recommended that you change your tyres when the tread depth is 3mm

Independent research* has provided convincing new evidence that worn tyres significantly increase the chances of having an accident on wet roads by increasing the stopping distance

The test results showed that significant increases in stopping distance began to appear when the tyre is worn down to 3m. Although the legal minimum UK tread depth is only 1.6mm, this new research showed tyres with 3mm tread had a 25% better performance than those at 1.6mm - which represents an extra 8 metres in wet conditions, and tyre grip when cornering is similarly reduced.

Stopping distance chart

It takes longer to stop with reduced tread in wet weather

New tyre	8 mm	25.9 metres
recommended minimum	3 mm	31.7 metres
legal limit	1.6 mm	39.5 metres



*Source: Tests were carried out by independent experts the Motor Industry Research Association in 2003 and 2004 on 4 different vehicles - a mid range family hatchback, an MPV, executive saloon and a high performance saloon car. Depth of water controlled to 0.5mm to 1.5mm, on an asphalt road surface. Maximum braking force applied from a speed of 50mph.

Tyres were tested at 4 different tread depths - 8 mm (new), 5mm, 3mm, and 1.6mm

Give your tyres a health check

- ✓ Every two weeks check the pressure of your tyres when they are cold.
- ✓ Check the tread depth of your tyres. Although the minimum legal UK tread depth is 1.6mm, we recommend that tyres should be replaced when the tread depth reaches 3mm. Remember as your tread depth decreases, your stopping distance in wet weather will increase. This is even more noticeable for cars with larger wheels and wider tyres.
- ✓ Check your tyres for damage. Look out for any cuts, cracks or bulges as these can lead to slow punctures and blowouts.
- ✓ Don't forget to check the pressure and tread depth of your spare tyre.

For more information visit: www.rosipa.com
www.roadsafe.com

How to check your tyres (ask for the handy tyre tread checker card)



Find your checker card on the 3mm leaflet in store.

STEP 1

Insert the card into the tread (with the red tab facing you) into the main grooves in the central three quarters of the tyre.

STEP 2

If you can still see the red in any of the main grooves you have less than 3mm and should change your tyres.